

Autism
is diagnosed in
approximately

16-42%
of individuals with
Down syndrome

compared to

1.9%
of individuals in the
general population

**Some core
traits overlap.**

*In individuals with both
Down syndrome and autism,
it can be unclear which traits
are due to which condition.*

To better understand this
overlap, we looked at



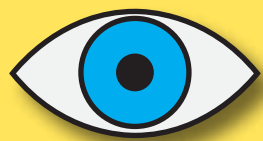
ages 6 to 23 years old

We found that

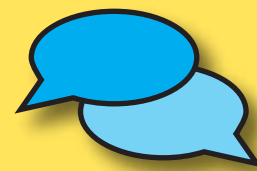
37%

met criteria for an
autism diagnosis

Compared to those without autism,
individuals with Down syndrome + autism
had more impairments in skills like



eye gaze



quality of social skills



use of gestures



expressive language

This was the largest study of autism in individuals with Down syndrome to date.
Our findings help us understand the profile of autistic traits in individuals with
Down Syndrome and the role language has in emergence of these traits.